

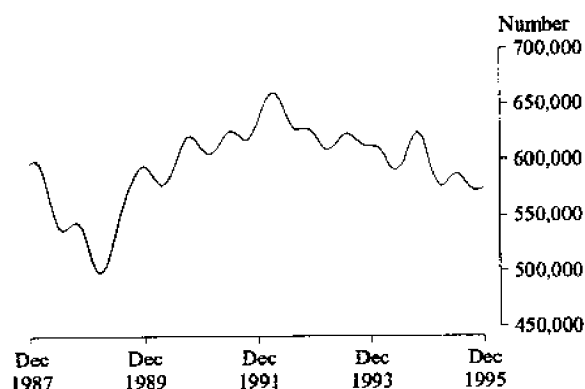
**LIVESTOCK PRODUCTS, AUSTRALIA
DECEMBER 1995**

MAIN FEATURES

Livestock Slaughtering

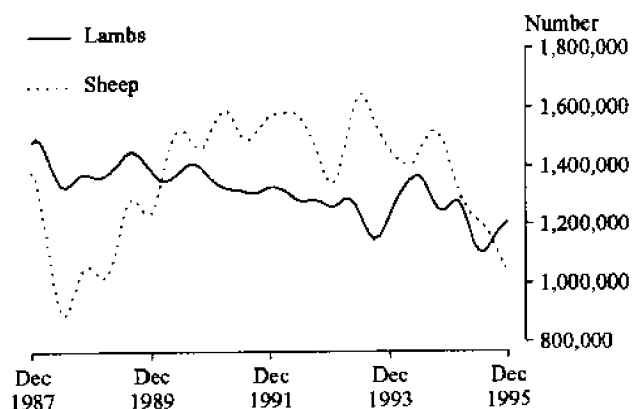
The trend estimate for cattle slaughtering rose marginally in December 1995, but since the last peak in June 1995 has fallen 2.2 per cent. The trend estimate for calves rose 1.7 per cent in December 1995 and since the last trough in April 1995 it has risen 7.3 per cent.

**CATTLE SLAUGHTERINGS
AUSTRALIA
Trend Series**



The trend estimate for sheep slaughtering fell 3.0 per cent between November and December 1995. Since the last peak in September 1994, it has fallen 31.7 per cent. The trend estimate for lamb slaughtering rose 1.3 per cent in December 1995, and is 9.3 per cent higher than the last trough in July 1995.

**SHEEP AND LAMB SLAUGHTERINGS
AUSTRALIA
Trend Series**



Pig slaughtering rose marginally in December 1995, but is still 6.6 per cent below the last peak in November 1994.

Red Meat

The trend estimate for red meat fell for the sixth consecutive month and is down 10.2 per cent since the last peak in September 1994. Beef also fell for the sixth consecutive month, but is still 2.8 per cent lower than the last peak in June 1995. The trend estimate for mutton fell 2.5 per cent from November 1995, and has fallen 27.7 per cent since the last peak in August 1994. The trend estimate for lamb rose by 1.5 per cent in December 1995 and has risen 16.2 per cent since the last trough in June 1995. Pig meat fell marginally from November 1995 and has fallen 7.5 per cent since the last peak in May 1995.

Chicken Meat

The trend estimate for chicken meat production continued to rise marginally in December 1995 and is now 4.7 per cent above the last trough in June 1995.

Whole Milk Intake

The trend estimate for whole milk intake by factories for November 1995 fell marginally for the first time in nine months, but is still 8.6 per cent above the last trough in March 1995.

Wool Receivals by Brokers and Dealers

The trend estimate for wool receivals by brokers and dealers rose 1.6 per cent in December 1995. Since the last trough in August 1995 it has risen 6.3 per cent, but this estimate is still 4.5 per cent below the last peak in February 1995.

Live Exports

The number of live sheep exported in November rose by 57.8 per cent to 425,400. The unit value (\$32.25) fell 10.6 per cent and the gross value (\$13.7 million) rose 41.2 per cent.

Live cattle exports fell 10.0 per cent in November 1995. The unit value (\$570.70) rose 5.7 per cent, while gross value (\$23.5 million) fell 5.0 per cent.

INQUIRIES

- for further information about statistics in this publication and the availability of related unpublished statistics — contact Oksana Melnyk on Canberra (06) 252 5226 or any ABS State office.
- for information about other ABS statistics and services please contact Information Services on (06) 252 6627, 252 6007 or any ABS State Office.

TABLE 1. NUMBERS OF LIVESTOCK SLAUGHTERED
(*000)

	NSW	Vic.	Qld	SA	WA	Tas.	Aust.	Seasonally adjusted	Trend estimate(b)
BULLS, BULLOCKS AND STEERS (a)									
1992-93	1,072.7	778.3	1,713.1	258.6	271.9	99.0	4,256.4
1993-94	1,008.5	772.0	1,700.5	199.0	271.2	101.8	4,070.0
1994-95 r	1,105.6	782.7	1,597.1	206.1	244.0	111.0	4,056.2
<i>1994-95 r—</i>									
October	95.6	64.1	152.8	24.3	22.8	6.2	367.4	345.8	351.6
November	113.9	76.3	160.0	17.7	26.0	10.2	404.6	352.6	353.5
December	84.7	69.8	120.1	26.3	25.4	11.3	337.7	375.7	348.3
January	82.5	62.3	71.7	18.3	20.3	11.3	266.4	335.0	338.5
February	83.0	66.3	95.7	17.8	19.1	9.5	291.3	315.1	329.0
March	100.7	66.2	113.8	21.0	23.4	13.0	338.2	320.9	323.7
April	80.2	59.8	109.2	13.1	14.1	9.5	286.0	310.4	324.3
May	94.2	72.4	125.7	17.6	18.0	10.9	339.5	312.5	328.0
June	79.8	76.2	163.8	12.7	18.4	10.5	362.9	373.9	331.2
<i>1995-96 p—</i>									
July	74.8	68.9	134.9	7.6	17.1	8.1	314.9	326.5	331.0
August	88.0	69.4	159.6	11.4	18.7	5.0	358.0	336.7	326.7
September	78.5	63.0	153.0	19.4	17.4	5.6	338.9	306.8	321.5
October	78.1	80.4	110.2	21.6	21.2	7.0	320.7	299.2	317.8
November	81.2	85.5	134.6	23.3	27.9	8.8	363.4	318.8	316.3
December	68.3	81.5	96.6	15.4	22.8	7.9	293.7	336.8	314.9
<i>6 Months ended December—</i>									
1994	585.1	379.6	917.3	105.6	130.7	46.2	2,171.9
1995 p	468.9	448.6	788.9	98.7	125.0	42.4	1,989.7
COWS AND HEIFERS (a)									
1992-93	985.5	587.5	1,138.3	149.7	180.5	90.4	3,186.2
1993-94	979.4	622.0	1,081.4	201.4	167.6	85.2	3,220.1
1994-95 r	945.4	684.6	960.7	218.1	186.4	96.9	3,165.3
<i>1994-95 r—</i>									
October	86.9	63.7	72.7	11.9	15.1	6.9	262.3	274.6	272.6
November	87.3	57.3	64.2	21.4	19.9	6.6	261.6	254.0	266.4
December	69.1	52.6	57.9	11.1	16.8	9.2	219.5	256.3	258.3
January	65.9	52.1	40.6	22.3	17.0	7.9	208.8	263.4	252.0
February	66.5	52.3	60.2	21.5	17.2	8.5	229.3	236.1	249.8
March	78.4	67.0	80.0	25.1	17.2	12.0	283.7	253.2	251.1
April	72.5	52.8	65.6	19.8	14.6	9.8	238.3	241.8	253.9
May	96.0	65.3	112.3	22.3	14.8	10.3	327.1	268.9	256.3
June	86.7	57.5	94.9	21.1	10.1	10.3	290.4	277.0	257.5
<i>1995-96 p—</i>									
July	75.0	44.6	76.0	13.1	12.0	5.8	232.0	237.4	257.4
August	83.6	44.6	90.4	16.0	15.1	4.8	262.2	256.8	256.0
September	79.1	43.2	86.7	17.2	17.6	4.4	259.5	257.9	254.7
October	80.7	51.2	67.0	16.2	16.6	6.3	245.4	251.3	254.5
November	85.7	57.7	68.8	17.6	15.6	7.1	259.7	254.3	254.8
December	68.2	51.8	51.3	13.9	17.2	8.5	216.4	261.2	255.8
<i>6 Months ended December—</i>									
1994	479.5	337.7	507.1	86.0	95.3	38.2	1,587.7
1995 p	472.4	293.1	440.2	94.1	94.1	36.8	1,475.2

TABLE 1. NUMBERS OF LIVESTOCK SLAUGHTERED
(^{'000})—continued

	NSW	Vic.	Qld	SA	WA	Tas.	Aust.	Seas- onally adjusted	Trend estimate(b)
TOTAL CATTLE (excludes calves) (a)									
1992-93	2,058.1	1,365.8	2,851.5	408.3	452.3	189.4	7,442.6
1993-94	1,987.9	1,393.9	2,781.8	400.3	438.8	187.0	7,290.1
1994-95 r	2,051.0	1,467.3	2,557.8	424.3	430.5	207.9	7,221.5
<i>1994-95 r—</i>									
October	182.5	127.8	225.6	36.2	37.9	13.1	629.6	620.0	624.8
November	201.2	133.6	224.2	39.1	45.9	16.8	666.2	609.1	620.9
December	153.9	122.4	178.0	37.4	42.2	20.5	557.2	640.7	607.9
January	148.4	114.3	112.3	40.6	37.3	19.2	475.2	591.1	591.8
February	149.6	118.6	155.9	39.3	36.3	17.9	520.7	552.3	580.2
March	179.1	133.2	193.8	46.1	40.6	25.0	622.0	572.4	575.5
April	152.7	112.5	174.8	32.9	28.7	19.3	524.3	559.2	578.0
May	190.2	137.7	237.9	39.9	32.9	21.2	666.6	589.0	583.5
June	166.5	133.7	258.7	33.8	28.6	20.8	653.2	631.0	587.3
<i>1995-96 p—</i>									
July	149.9	113.5	210.9	20.7	29.2	13.9	546.9	568.9	586.5
August	171.6	114.0	250.0	27.4	33.8	9.8	620.2	586.4	580.8
September	157.5	106.2	239.7	36.6	35.0	10.0	598.4	577.1	575.1
October	158.9	131.6	177.2	37.8	37.8	13.3	566.1	542.4	572.4
November	166.9	143.1	203.3	40.9	43.4	15.9	623.1	568.1	572.5
December	136.5	133.2	147.9	29.3	40.0	16.4	510.1	608.4	574.3
<i>6 Months ended December—</i>									
1994	1,064.5	717.3	1,424.4	191.6	226.0	84.5	3,759.6
1995 p	941.2	741.6	1,229.1	192.8	219.1	79.2	3,464.9
CALVES									
1992-93	224.2	608.5	153.8	9.2	4.6	32.7	1,034.1
1993-94	221.4	583.4	148.7	8.8	4.4	23.2	991.6
1994-95 r	248.3	635.6	115.7	12.0	4.4	29.2	1,047.3
<i>1994-95 r—</i>									
October	22.8	62.1	9.4	1.1	0.3	2.9	98.7	95.7	91.1
November	22.9	24.7	8.6	1.0	0.4	0.5	58.4	95.9	90.4
December	13.0	7.9	8.7	0.7	0.3	0.1	30.8	84.8	88.5
January	18.6	5.8	9.8	1.0	0.5	0.1	35.9	87.2	85.8
February	17.9	4.8	8.8	0.6	0.3	0.1	32.7	79.6	83.3
March	25.0	11.0	10.1	1.2	0.4	0.4	48.3	85.3	81.8
April	17.0	24.3	8.1	0.8	0.3	1.0	51.7	75.5	81.7
May	21.3	47.6	10.5	1.3	0.3	1.2	82.4	79.1	82.3
June	23.0	74.2	10.9	1.1	0.2	0.9	110.6	93.8	82.7
<i>1995-96 p—</i>									
July	18.9	81.6	9.6	1.1	0.3	1.1	112.6	85.8	82.8
August	24.2	137.0	8.9	1.4	0.3	14.0	185.8	71.4	82.9
September	19.8	119.3	7.3	1.2	0.2	16.6	164.6	89.1	83.5
October	18.5	53.8	7.4	1.0	0.2	5.3	86.3	81.2	84.6
November	21.2	20.8	6.7	0.7	0.3	0.8	50.7	82.8	86.1
December	13.7	12.0	5.7	0.6	0.2	0.9	33.3	96.5	87.6
<i>6 Months ended December—</i>									
1994	125.5	467.8	57.5	6.0	2.4	25.4	685.7
1995 p	116.2	424.5	45.5	6.1	1.5	38.7	633.2

TABLE 1. NUMBERS OF LIVESTOCK SLAUGHTERED
(*000)—continued

	<i>NSW</i>	<i>Vic.</i>	<i>Qld</i>	<i>SA</i>	<i>WA</i>	<i>Tas.</i>	<i>Aust.</i>	<i>Seas- onally adjusted</i>	<i>Trend estimate(b)</i>
SHEEP									
1992-93	5,233.6	3,722.6	1,389.2	2,769.7	3,752.3	473.4	17,525.0
1993-94	6,066.9	3,975.9	856.6	3,078.3	2,952.2	526.1	17,641.0
1994-95 r	6,577.8	3,229.6	480.2	3,114.4	2,438.1	569.3	16,559.2
<i>1994-95 r—</i>									
October	656.0	340.3	45.0	308.3	214.2	36.2	1,612.8	1,509.1	1,511.7
November	704.9	414.7	37.0	374.1	230.7	63.2	1,840.8	1,482.5	1,481.0
December	537.6	351.7	27.8	310.2	194.1	64.2	1,497.0	1,365.5	1,431.3
January	534.4	339.6	28.8	301.9	220.2	50.1	1,485.6	1,417.2	1,371.4
February	488.9	330.6	28.0	277.9	219.6	58.6	1,414.2	1,287.5	1,317.4
March	560.6	295.1	37.8	321.5	242.0	68.6	1,537.6	1,297.1	1,278.3
April	457.5	182.6	34.5	245.6	181.2	46.3	1,161.1	1,203.1	1,250.3
May	557.6	186.2	39.1	219.9	198.5	43.6	1,258.7	1,260.0	1,228.6
June	434.3	147.3	38.6	116.0	145.9	42.8	935.0	1,200.8	1,213.2
<i>1995-96 p—</i>									
July	452.8	150.0	37.6	87.4	145.0	18.6	902.1	1,196.7	1,197.4
August	437.3	160.7	38.4	128.0	191.2	18.2	984.4	1,200.8	1,175.2
September	434.3	197.4	38.9	189.7	161.6	18.0	1,050.2	1,114.0	1,144.2
October	524.5	279.5	29.7	206.9	194.9	25.5	1,270.6	1,185.0	1,108.0
November	412.8	280.8	29.5	240.3	231.6	36.5	1,245.4	1,022.5	1,070.5
December	398.0	246.8	27.2	148.3	196.2	41.9	1,067.3	998.2	1,038.5
<i>6 Months ended December—</i>									
1994	3,544.5	1,748.2	273.3	1,631.6	1,230.7	259.3	8,767.0
1995 p	2,659.6	1,315.2	201.3	1,000.6	1,120.5	158.7	6,519.9
LAMBS									
1992-93	4,140.2	6,288.1	648.0	2,062.3	1,480.8	456.5	15,434.9
1993-94	3,991.7	5,600.8	669.6	2,363.8	1,553.2	437.8	14,967.2
1994-95 r	4,133.7	6,303.2	469.8	1,914.8	1,263.7	477.2	14,950.7
<i>1994-95 r—</i>									
October	321.8	578.2	31.8	138.5	163.1	30.4	1,296.9	1,151.0	1,253.3
November	315.0	619.2	27.1	175.9	121.6	37.3	1,325.5	1,196.4	1,248.4
December	276.1	516.8	22.7	152.7	82.7	41.3	1,118.7	1,206.1	1,261.8
January	413.3	511.6	28.4	158.0	91.0	40.7	1,274.2	1,427.0	1,278.2
February	292.1	478.4	27.2	165.1	113.3	37.1	1,143.8	1,278.5	1,280.3
March	352.0	522.8	46.7	191.0	117.2	48.3	1,316.4	1,255.5	1,254.2
April	318.6	464.2	46.8	141.2	97.7	41.1	1,145.2	1,233.7	1,203.3
May	337.7	512.0	52.0	143.7	96.2	41.1	1,218.6	1,137.3	1,147.9
June	269.2	453.2	44.6	110.7	61.8	44.8	1,005.4	1,056.4	1,111.8
<i>1995-96 p—</i>									
July	274.3	449.5	38.1	97.5	53.5	25.6	960.6	1,062.4	1,106.2
August	324.1	494.8	40.1	167.0	92.3	27.3	1,176.1	1,097.7	1,124.5
September	306.5	524.5	39.5	214.0	149.6	29.0	1,290.8	1,223.8	1,150.7
October	308.9	614.9	37.3	223.6	153.1	28.6	1,393.4	1,193.3	1,175.2
November	288.0	586.9	32.8	200.8	126.8	34.9	1,303.8	1,198.0	1,194.3
December	240.2	502.2	33.7	140.5	79.2	40.9	1,060.8	1,173.8	1,209.4
<i>6 Months ended December—</i>									
1994	2,150.8	3,361.0	224.2	1,005.0	686.6	224.0	7,847.1
1995 p	1,742.0	3,172.9	221.6	1,043.4	654.5	186.4	7,185.5

TABLE 1. NUMBERS OF LIVESTOCK SLAUGHTERED
(*000)—continued

	NSW	Vic.	Qld	SA	WA	Tas.	Aust.	Seasonally adjusted	Trend estimate(b)
	PIGS								
1992-93	1,480.5	1,070.8	1,155.3	568.2	567.6	92.5	5,031.7
1993-94	1,490.9	1,188.5	1,207.9	562.1	550.4	95.8	5,190.2
1994-95 r	1,505.4	1,196.9	1,154.4	469.6	604.1	92.9	5,120.2
<i>1994-95 r—</i>									
October	121.5	100.3	94.3	41.3	48.0	6.7	420.1	445.9	433.6
November	129.2	97.6	99.6	51.3	49.5	8.0	444.7	426.1	434.0
December	142.6	104.9	94.3	37.6	53.0	9.7	449.3	432.2	431.4
January	110.0	88.9	80.4	35.2	43.0	5.8	370.0	428.7	427.4
February	114.4	89.9	91.2	42.2	46.2	7.0	398.1	430.2	423.9
March	131.8	106.7	103.2	32.8	52.8	8.8	444.7	413.9	421.4
April	113.0	85.9	85.7	30.1	51.0	7.2	380.2	404.5	419.7
May	132.8	114.9	100.4	43.0	56.3	8.2	464.8	429.4	418.7
June	139.4	106.7	107.0	34.2	57.5	8.6	459.9	435.9	416.6
<i>1995-96 p—</i>									
July	117.9	87.9	86.5	33.4	52.6	6.5	391.4	401.3	413.8
August	120.2	100.5	96.1	37.5	52.4	7.3	422.4	398.4	410.4
September	127.0	93.2	97.5	32.4	50.5	7.1	414.8	423.2	407.1
October	114.1	97.1	85.0	30.8	48.7	6.1	388.5	404.0	405.2
November	115.8	96.6	89.8	36.6	47.8	6.9	401.5	381.9	404.4
December	138.0	101.1	95.9	28.2	49.4	8.3	427.6	426.6	405.2
<i>6 Months ended December—</i>									
1994	764.1	603.9	586.4	252.1	297.3	47.2	2,602.6
1995 p	733.0	576.4	550.8	198.8	301.4	42.2	2,446.1

(a) Domesticated buffaloes slaughtered in the Northern Territory are included in Australian totals. (b) Trend estimates for the most recent months are subject to revision when data for subsequent months become available.

TABLE 2. RED MEAT PRODUCED (a)
(Tonnes carcass weight)

	<i>NSW</i>	<i>Vic.</i>	<i>Old</i>	<i>SA</i>	<i>WA</i>	<i>Tas.</i>	<i>Aust.</i>	<i>Seas- onally adjusted</i>	<i>Trend estimate(b)</i>
BEEF (c)									
1992-93	472,313	299,907	753,477	96,338	100,196	44,925	1,786,860
1993-94	466,387	315,279	742,701	94,395	101,513	47,458	1,786,224
1994-95 r	471,183	335,059	697,750	99,108	97,140	49,827	1,765,328
<i>1994-95 r—</i>									
October	42,057	28,569	60,905	8,255	8,764	3,160	152,933	153,013	152,608
November	45,279	30,214	62,907	8,927	10,573	4,136	163,080	144,395	151,245
December	35,033	27,486	49,828	8,859	9,562	5,104	136,467	152,948	147,943
January	34,189	25,942	31,450	9,623	8,431	4,787	115,037	146,416	144,154
February	34,356	26,446	44,006	9,445	8,267	4,547	127,695	135,143	141,632
March	42,031	30,505	53,539	11,094	9,373	5,931	153,279	138,993	140,641
April	35,011	25,433	48,232	7,764	6,498	4,370	127,870	141,557	141,024
May	42,774	31,384	63,477	9,421	7,333	4,881	160,569	141,420	141,779
June	36,792	30,983	65,044	7,719	6,182	4,864	153,649	147,848	142,271
<i>1995-96 p—</i>									
July	34,180	25,310	57,540	3,526	6,151	3,569	131,436	139,524	142,069
August	39,259	23,804	68,083	6,588	7,515	2,312	150,288	142,598	140,925
September	36,128	23,831	64,916	8,850	7,872	2,354	146,288	140,954	139,656
October	35,769	30,513	47,280	9,382	9,292	3,151	137,232	133,123	138,821
November	39,480	33,692	56,512	9,914	10,126	3,846	155,321	137,800	138,435
December	32,032	31,030	41,203	7,059	9,066	3,982	125,640	142,919	138,227
<i>6 Months ended December—</i>									
1994	246,031	164,366	392,001	44,042	51,057	20,447	927,230
1995 p	216,848	168,180	335,534	45,319	50,022	19,214	846,205
VEAL									
1992-93	15,448	14,948	7,179	320	303	692	38,954
1993-94	17,551	13,466	6,352	302	296	515	38,581
1994-95 r	16,677	14,428	4,918	433	287	1,059	37,926
<i>1994-95 r—</i>									
October	1,378	1,367	382	39	22	125	3,321	3,333	3,358
November	1,460	608	338	44	26	18	2,510	3,398	3,288
December	867	275	341	27	23	10	1,551	3,052	3,186
January	1,266	227	387	46	33	11	1,981	3,105	3,071
February	1,198	203	365	25	22	8	1,828	2,813	2,968
March	1,751	328	448	39	25	18	2,621	3,242	2,885
April	1,114	582	336	27	17	36	2,119	2,569	2,837
May	1,439	1,072	484	35	16	39	3,100	2,758	2,827
June	1,623	1,572	482	32	14	38	3,770	2,919	2,847
<i>1995-96 p—</i>									
July	1,286	1,642	425	31	17	30	3,438	2,907	2,887
August	1,659	2,773	357	39	19	353	5,208	2,853	2,934
September	1,327	2,416	274	36	16	418	4,494	3,180	2,976
October	1,299	1,170	292	32	16	141	2,957	2,913	3,002
November	1,350	520	263	26	18	24	2,210	2,932	3,017
December	857	341	222	20	17	28	1,491	3,094	3,027
<i>6 Months ended December—</i>									
1994	8,286	10,446	2,417	230	159	909	22,508
1995 p	7,778	8,862	1,834	183	103	994	19,797

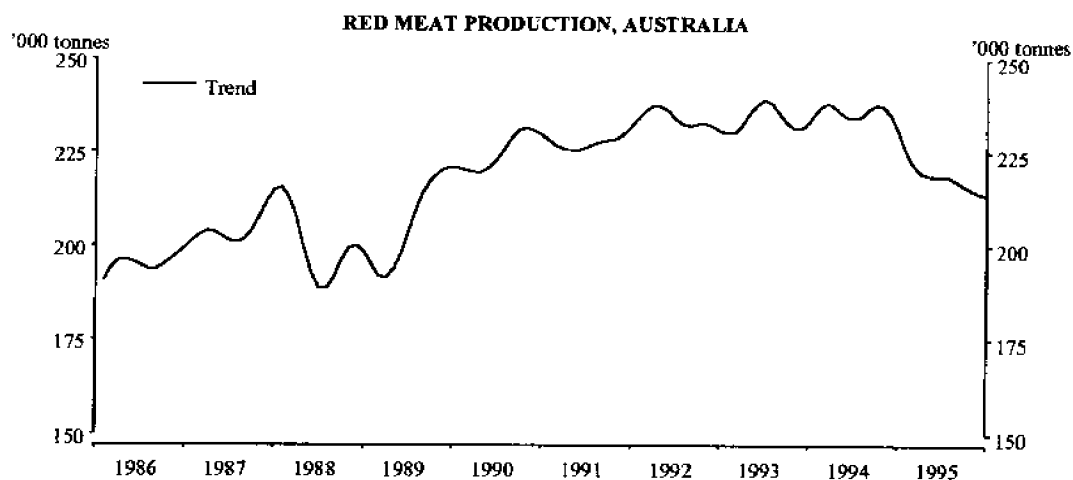
TABLE 2. RED MEAT PRODUCED (a)
(Tonnes carcass weight)—continued

	NSW	Vic.	Qld	SA	WA	Tas.	Aust.	Seasonally adjusted	Trend estimate(b)
MUTTON									
1992-93	105,819	81,907	26,656	65,689	76,921	8,949	369,953
1993-94	127,582	85,010	17,326	71,354	61,731	9,992	376,764
1994-95 r	131,052	64,440	9,479	66,759	47,776	11,230	333,668
<i>1994-95 r—</i>									
October	13,385	7,070	917	6,700	4,042	723	33,131	30,340	30,241
November	14,445	8,459	722	8,282	4,778	1,277	38,300	30,157	29,755
December	10,976	6,956	537	6,781	3,814	1,275	30,594	27,751	28,958
January	10,742	6,657	543	6,409	4,345	969	29,878	29,241	27,851
February	9,366	6,431	560	5,883	4,320	1,130	27,873	25,636	26,666
March	10,960	5,578	744	6,768	4,728	1,311	30,322	26,039	25,692
April	8,894	3,478	672	5,054	3,484	884	22,655	24,762	24,978
May	10,509	3,695	763	4,543	3,829	895	24,471	24,281	24,509
June	8,400	2,917	763	2,490	2,794	877	18,452	23,687	24,312
<i>1995-96 p—</i>									
July	9,155	2,978	715	1,967	2,779	389	18,206	24,507	24,232
August	9,000	3,240	731	3,061	3,822	378	20,474	25,173	24,075
September	9,267	4,092	763	4,525	3,094	372	22,300	22,484	23,728
October	11,505	5,850	578	5,002	3,875	529	27,520	25,117	23,225
November	9,031	5,922	566	6,001	4,394	797	27,006	21,865	22,649
December	8,863	5,202	522	3,421	3,926	903	23,004	20,985	22,081
<i>6 Months ended December —</i>									
1994	72,181	35,686	5,433	35,612	24,277	5,164	180,017
1995 p	56,821	27,285	3,876	23,977	21,890	3,367	138,510
LAMB									
1992-93	72,608	113,220	10,570	39,334	23,395	7,456	273,424
1993-94	69,246	101,386	11,072	45,199	24,936	7,047	265,424
1994-95 r	71,738	111,202	7,942	36,147	18,955	8,412	261,886
<i>1994-95 r—</i>									
October	5,665	10,075	535	2,441	2,499	565	22,359	19,937	22,310
November	5,549	10,944	453	3,244	1,866	657	23,599	21,952	21,863
December	4,546	8,999	385	2,816	1,218	691	19,156	20,991	21,760
January	5,475	9,168	496	2,972	1,438	681	20,804	22,837	21,802
February	5,085	8,525	473	3,128	1,831	615	20,267	22,254	21,730
March	6,466	9,378	790	3,715	1,718	808	23,386	21,813	21,306
April	5,632	7,884	787	2,691	1,484	689	19,722	20,852	20,599
May	5,971	9,183	867	2,723	1,425	761	21,537	19,605	19,940
June	4,818	7,991	726	2,040	867	829	17,674	18,664	19,700
<i>1995-96 p—</i>									
July	4,955	7,997	643	1,799	963	481	17,257	19,352	19,978
August	5,845	8,997	684	3,204	1,609	514	21,430	19,976	20,654
September	5,519	9,741	715	4,212	2,494	546	23,745	23,280	21,422
October	5,612	11,474	657	4,455	2,438	540	25,718	22,260	22,067
November	5,196	10,921	565	4,017	2,062	659	24,057	22,636	22,548
December	4,437	9,456	570	2,696	1,200	772	19,547	22,029	22,889
<i>6 Months ended December —</i>									
1994	38,291	59,073	3,803	18,878	10,192	4,030	138,496
1995 p	31,565	58,586	3,835	20,384	10,764	3,513	131,754

TABLE 2. RED MEAT PRODUCED (a)
(Tonnes carcass weight)—*continued*

	<i>NSW</i>	<i>Vic.</i>	<i>Qld</i>	<i>SA</i>	<i>WA</i>	<i>Tas.</i>	<i>Aust.</i>	<i>Seas- onally adjusted</i>	<i>Trend estimate(b)</i>
PIGMEAT									
1992-93	94,760	70,535	79,749	38,153	33,562	5,749	328,317
1993-94	98,606	78,488	84,553	38,394	32,423	6,019	344,260
1994-95 r	102,175	84,727	83,143	32,063	37,109	5,982	351,337
<i>1994-95 r—</i>									
October	7,971	7,088	6,881	2,794	2,882	474	28,603	30,505	29,238
November	8,452	7,216	7,186	3,440	3,115	493	30,508	29,138	29,238
December	8,792	7,303	6,469	2,629	2,992	649	29,260	28,645	29,094
January	7,143	6,182	5,669	2,368	2,504	381	24,636	29,000	28,976
February	7,254	6,187	6,608	2,684	2,717	464	26,336	28,857	29,007
March	9,617	7,471	7,302	2,237	3,233	572	31,017	28,890	29,236
April	8,320	6,092	6,207	2,069	3,379	464	26,952	28,522	29,529
May	10,139	8,534	7,406	3,009	3,730	532	33,954	31,429	29,742
June	9,650	8,104	7,822	2,386	3,839	553	32,858	30,455	29,688
<i>1995-96 p—</i>									
July	8,173	6,564	6,293	2,161	3,323	426	27,345	28,182	29,361
August	9,208	7,400	6,954	2,614	3,227	475	30,454	29,312	28,861
September	8,399	6,930	7,167	2,240	3,144	470	28,813	28,003	28,343
October	7,747	7,081	6,249	2,125	3,013	399	27,048	28,377	27,933
November	7,766	7,019	6,432	2,476	2,957	449	27,521	26,363	27,618
December	8,695	7,125	6,680	1,846	3,103	540	28,360	28,487	27,499
<i>6 Months ended December —</i>									
1994	50,052	42,157	42,129	17,310	17,706	3,016	175,583
1995 p	49,988	42,118	39,776	13,462	18,766	2,760	169,542
TOTAL RED MEAT (c)									
1992-93	760,949	580,516	877,632	239,833	234,378	67,770	2,797,507
1993-94	779,374	593,630	862,003	249,644	220,899	71,031	2,811,254
1994-95 r	792,826	609,856	803,232	234,511	201,266	76,511	2,750,146
<i>1994-95 r—</i>									
October	70,458	54,168	69,619	20,229	18,209	5,047	240,348	237,127	237,755
November	75,185	57,440	71,606	23,936	20,357	6,581	257,998	229,040	235,389
December	60,214	51,019	57,559	21,111	17,608	7,731	217,028	233,387	230,942
January	58,815	48,175	38,545	21,419	16,750	6,829	192,336	230,599	225,854
February	57,259	47,791	52,012	21,165	17,157	6,763	204,000	214,703	222,003
March	70,824	53,260	62,824	23,852	19,076	8,641	240,625	218,977	219,761
April	58,971	43,468	56,234	17,605	14,863	6,444	199,318	218,262	218,967
May	70,832	53,867	72,998	19,731	16,334	7,108	243,631	219,493	218,797
June	61,285	51,566	74,836	14,667	13,696	7,161	226,403	223,573	218,818
<i>1995-96 p—</i>									
July	57,749	44,491	65,617	9,485	13,234	4,895	197,682	214,472	218,526
August	64,970	46,216	76,809	15,506	16,192	4,031	227,855	219,912	217,450
September	60,640	47,010	73,836	19,863	16,620	4,161	225,640	217,901	216,124
October	61,932	56,087	55,056	20,995	18,634	4,761	220,475	211,791	215,048
November	62,824	58,073	64,339	22,434	19,556	5,775	236,115	211,595	214,266
December	54,884	53,154	49,197	15,042	17,311	6,225	198,042	217,514	213,723
<i>6 Months ended December —</i>									
1994	414,839	311,728	445,783	116,072	103,390	33,566	1,443,833
1995 p	362,999	305,032	384,855	103,325	101,546	29,848	1,305,809

(a) Red meat is shown in carcass weight and excludes offal. (b) Trend estimates for the most recent months are subject to revision when data for subsequent months become available. (c) Buffalo meat produced in the Northern Territory is included in Australian totals.



RELIABILITY OF DECEMBER TREND ESTIMATES FOR PRODUCTION OF RED MEAT

Readers should exercise care in the interpretation of trend data as the last six observations, in particular, are likely to be revised with either revisions to the underlying data or the addition of data for the month of January.

The table below shows, for red meat production for the six months ended December:

- trend estimates as published;
- trend estimates assuming an increase in seasonally adjusted data for January of 3% on the December figure;
- trend estimates assuming a decrease in seasonally adjusted data for January of 3% on the December figure.

The percentage change of 3% was chosen because the average absolute monthly percentage change in the seasonally adjusted data since the inception of the series has been 3.21%

	<i>Trend as published</i>	<i>Trend change with seasonally adjusted December estimate</i>	
		+3%	-3%
(tonnes, carcass weight)			
1995-96p			
July	218,526	218,309	218,579
August	217,450	217,128	217,603
September	216,124	215,947	216,184
October	215,048	215,527	214,901
November	214,266	215,913	213,845
December	213,723	216,856	212,959
January	—	218,470	212,589

TABLE 3. STOCKS OF FROZEN MEAT(a), AUSTRALIA
(Source: Australian Meat and Livestock Corporation)
(tonnes)

At last Saturday of	Beef(b) and veal	Mutton	Lamb	Pork	Goat	Offal	Total
<i>1994-95 —</i>							
September	32,567	5,976	3,497	2,217	188	7,964	52,409
October	32,451	6,247	2,955	2,239	134	8,163	52,189
November	34,016	7,166	3,095	2,070	134	8,943	55,424
December	31,146	6,966	2,345	2,142	136	8,010	50,745
January	30,098	6,244	2,037	1,033	100	7,746	47,258
February	31,916	6,451	2,126	1,160	137	7,870	49,660
March	30,793	6,345	2,359	1,194	93	6,996	47,780
April	31,704	6,356	2,085	1,102	63	6,832	48,142
May	32,536	7,079	2,318	1,736	165	7,299	51,133
June	32,511	6,945	2,144	1,759	113	6,961	50,433
<i>1995-96 p—</i>							
July	31,736	7,034	1,871	1,954	132	7,056	49,783
August	32,377	7,208	2,014	3,561	85	7,226	52,471
September	32,333	7,046	2,416	4,319	55	7,389	53,558
October	30,964	6,752	2,775	3,523	62	6,874	50,950
November	28,200	7,727	2,880	3,681	112	7,075	49,675

(a) Held in cold stores registered to handle meat for export, and includes meat passed for export, canning and other purposes. Includes boneless and carcass meat.

(b) Includes buffalo meat.

TABLE 4. EXPORTS OF FRESH, FROZEN AND PROCESSED MEAT(a), AUSTRALIA
(tonnes)

	<i>Fresh, chilled or frozen</i>								Pork	Bacon and ham(d)	Canned meat(e)
	<i>Beef(b)(c)</i>		<i>Veal(b)</i>		<i>Mutton(b)</i>		<i>Lamb(b)</i>				
	<i>Bone-in</i>	<i>Bone-out</i>	<i>Bone-in</i>	<i>Bone-out</i>	<i>Bone-in</i>	<i>Bone-out</i>	<i>Bone-in</i>	<i>Bone-out</i>			
1992-93	80,979	739,863	2,087	5,361	80,195	77,394	46,681	5,537	6,974	128	7,270
1993-94	62,662	742,390	1,342	5,818	97,851	70,959	52,719	5,226	5,855	204	10,354
1994-95 r	59,786	716,675	1,983	6,920	103,259	65,380	48,537	4,595	5,496	160	11,531
<i>1994-95 —</i>											
September	7,455	63,245	416	774	10,420	5,454	4,268	535	520	2	980
October	8,603	69,899	229	1,194	13,268	5,633	3,920	387	734	20	701
November	6,405	72,328	177	944	13,527	6,172	3,738	254	678	4	816
December	4,596	55,064	138	633	10,232	6,954	r4,696	407	r411	9	1,154
January	2,659	49,052	38	291	6,765	5,006	r2,912	259	r296	24	1,012
February	3,604	50,481	104	305	7,035	6,056	r3,722	313	r244	3	981
March r	3,402	61,548	136	325	8,415	6,370	4,472	376	159	7	1,369
April r	4,441	56,136	94	183	7,992	5,719	4,302	503	350	24	1,152
May r	5,155	59,495	184	275	7,352	5,117	3,699	369	405	19	899
June r	5,576	59,107	148	357	5,908	4,617	2,396	390	452	37	1,105
<i>1995-96 p—</i>											
July	5,429	67,649	126	638	5,254	3,868	2,522	432	507	18	1,151
August	3,906	54,826	144	677	4,257	4,228	2,761	444	566	25	1,643
September	4,897	61,796	196	732	5,526	4,519	3,668	627	428	15	1,197
October	5,753	63,428	106	1,009	5,996	5,604	4,839	638	483	17	1,191
November	5,910	57,894	108	414	7,564	7,063	4,686	630	673	1	1,461
<i>5 Months ended</i>											
<i>November —</i>											
1994	30,354	325,792	1,141	4,552	49,559	25,540	22,339	1,979	3,180	38	3,860
1995 p	25,895	305,593	680	3,470	28,597	25,282	18,475	2,771	2,658	76	6,643

(a) Excludes offal. (b) Factors can be applied to beef, veal, mutton and lamb bone-out figures to derive bone-in carcass weight which, when added to bone-in figures, shows total exports in carcass weight. The factor for beef and veal is 1.5 and for mutton and lamb is 2.0 (Source: Australian Meat and Livestock Corporation). (c) Includes buffalo meat. (d) Cured carcass weight of smoked or cooked bacon and ham. Includes stated net weight of packs of canned bacon and ham. (e) Canned weight. Excludes canned bacon and ham.

TABLE 5. EXPORTS OF LIVE SHEEP(a), AUSTRALIA

	Number (<i>'000</i>)	Gross Weight (<i>'000 tonnes</i>)	Gross Value (<i>\$ '000</i>)	Unit Value(b) (<i>\$</i>)
1992-93	5,097.1	270.5	121,933	23.92
1993-94	5,429.8	287.4	148,907	27.42
1994-95	5,533.6	283.6	179,086	32.36
<i>1994-95 —</i>				
September	311.3	15.5	9,894	31.79
October	417.4	21.7	12,358	29.61
November	563.6	30.6	15,053	26.71
December	477.2	25.3	14,448	30.27
January	610.6	32.2	19,355	31.70
February	534.6	27.2	17,886	33.45
March	516.4	27.0	17,116	33.14
April	648.9	33.0	23,176	35.71
May	373.7	18.0	14,001	37.46
June	225.0	10.8	8,656	38.47
<i>1995-96 p—</i>				
July	607.0	30.5	25,311	41.70
August	585.3	28.2	24,709	42.22
September	503.0	25.0	20,138	40.03
October	269.5	13.9	9,718	36.06
November	425.4	22.5	13,719	32.25
<i>5 Months ended November —</i>				
1994	2,147.0	110.1	64,448	30.02
1995 p	2,390.2	120.0	93,595	39.16

(a) Excludes sheep for breeding. (b) Obtained by dividing the gross value by the number of sheep exported.

TABLE 6. EXPORTS OF LIVE CATTLE(a), AUSTRALIA

	Number (<i>'000</i>)	Gross Weight (<i>'000 tonnes</i>)	Gross Value (<i>\$ '000</i>)	Unit Value(b) (<i>\$</i>)
1992-93	148.6	50.4	69,847	470.19
1993-94	234.7	79.9	115,020	489.97
1994-95	385.7	136.5	201,948	523.52
<i>1994-95 —</i>				
September	29.5	10.3	13,382	454.18
October	23.9	8.9	11,624	485.41
November	33.5	11.2	17,523	523.78
December	36.0	13.1	18,349	509.02
January	29.3	11.3	16,403	559.33
February	27.8	10.9	15,892	571.74
March	31.6	11.3	16,651	527.03
April	34.8	12.7	17,955	515.37
May	41.6	13.8	23,456	563.59
June	47.4	16.6	26,687	563.05
<i>1995-96 p—</i>				
July	49.5	17.5	27,432	554.64
August	49.7	16.9	28,009	564.07
September	37.2	12.2	20,488	550.99
October	45.9	15.4	24,796	539.77
November	41.3	14.4	23,545	570.70
<i>5 Months ended November —</i>				
1994	137.1	46.9	66,555	485.35
1995 p	223.5	76.5	124,270	556.04

(a) Excludes cattle for breeding. (b) Obtained by dividing the gross value by the number of cattle exported.

TABLE 7. CHICKENS SLAUGHTERED (a)
(*000)

	NSW	Vic.	Qld	SA	WA	Aust.(b)
1992-93	117,085.9	78,614.7	52,454.7	25,396.6	30,575.8	304,127.8
1993-94	129,735.5	85,797.9	54,133.1	28,376.4	31,481.8	329,524.7
1994-95 r	133,799.9	77,337.1	56,057.2	28,778.9	33,938.6	329,911.8
<i>1994-95 —</i>						
October	10,864.4	6,874.2	4,999.3	2,507.6	2,836.8	28,082.3
November	r10,463.0	5,882.2	4,350.1	2,223.5	2,721.8	25,640.6
December	r13,106.9	r7,184.1	4,618.1	2,427.1	3,417.8	30,754.0
January	r10,615.8	6,548.4	4,931.4	2,521.4	2,920.3	27,537.3
February	10,820.8	6,200.2	4,418.4	2,303.7	2,725.7	26,468.8
March	12,385.8	6,731.2	4,847.0	2,610.5	2,678.9	29,253.4
April	10,444.0	6,520.6	4,605.5	2,782.3	2,742.9	27,095.2
May	10,389.2	6,208.8	4,412.3	2,141.7	2,725.6	25,877.6
June	11,051.0	6,305.2	4,618.3	2,189.9	2,879.0	27,043.4
<i>1995-96 p—</i>						
July	11,164.2	6,528.3	5,408.1	2,420.8	3,040.6	28,562.1
August	10,753.6	5,966.2	4,428.5	2,057.1	2,593.9	25,799.4
September	11,331.8	6,547.5	4,826.6	2,226.2	2,896.9	27,829.1
October	10,537.9	6,470.7	4,112.7	2,178.6	3,069.4	26,369.3
November	11,270.8	6,064.2	4,478.7	2,297.1	2,838.3	26,949.1
December	11,825.8	7,232.2	4,961.0	2,418.9	3,078.2	29,516.2
<i>6 Months ended December —</i>						
1994	68,093.3	38,822.8	28,224.3	14,229.4	17,266.3	166,636.0
1995 p	66,884.2	38,809.2	28,215.7	13,598.7	17,517.2	165,025.1

(a) Comprises broilers, fryers and roosters. (b) Excludes Tasmania, the Northern Territory and the Australian Capital Territory.

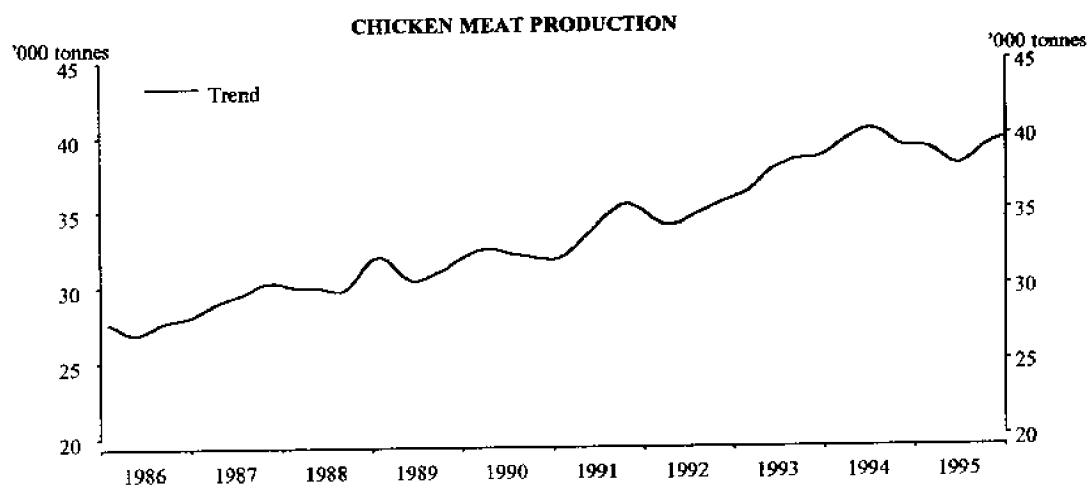
TABLE 8. CHICKEN MEAT PRODUCED (a)
(Tonnes carcass weight)

	NSW	Vic.	Qld	SA	WA	Aust.(b)	Trend estimate(c)
1992-93	176,465	114,587	67,305	38,619	37,740	434,716	..
1993-94	193,137	123,529	72,000	40,671	39,386	468,722	..
1994-95 r	199,491	110,971	74,477	39,032	42,007	465,977	..
<i>1994-95 —</i>							
October	16,157	9,574	6,706	3,209	3,428	39,074	39,289
November	r15,372	8,051	5,692	2,845	3,372	35,334	39,137
December	r19,183	r9,896	5,858	3,321	4,259	42,517	39,145
January	r16,168	8,879	6,421	3,491	3,644	38,602	39,170
February	16,211	9,222	5,879	3,168	3,316	37,796	39,093
March	19,072	9,995	6,437	3,563	3,315	42,383	38,767
April	15,352	9,294	5,896	3,928	3,353	37,823	38,374
May	15,342	8,921	5,898	3,028	3,426	36,615	38,029
June	16,026	8,835	6,141	2,933	3,640	37,575	37,943
<i>1995-96 p—</i>							
July	16,385	9,180	7,153	3,465	3,812	39,996	38,184
August	15,976	9,350	5,550	2,656	3,249	36,781	38,604
September	16,867	9,703	6,210	3,111	3,538	39,429	39,063
October	15,394	9,669	5,277	2,961	3,896	37,197	39,354
November r	16,452	9,005	5,703	3,182	3,671	38,014	39,546
December	17,819	10,692	6,396	3,416	3,867	42,190	39,711
<i>6 Months ended December —</i>							
1994	101,320	55,824	37,806	18,920	21,313	235,184	..
1995 p	98,894	57,600	36,288	18,791	22,034	233,607	..

(a) Chicken meat is shown in dressed weight of whole birds, pieces and giblets. (b) Excludes Tasmania, the Northern Territory and the Australian Capital Territory.

(c) Trend estimates for the most recent months are subject to revision when data for subsequent months become available.

Note: Some slaughtering and meat production statistics for 'Ducks and Drakes' and 'Other Fowls and Turkeys' are available by contacting the ABS on Canberra 252 5337 or by writing to PO Box 10, Belconnen ACT 2616 (Attention: Agriculture Section).



RELIABILITY OF DECEMBER TREND ESTIMATES FOR CHICKEN MEAT

Readers should exercise care in the interpretation of trend data as the last six observations, in particular, are likely to be revised with either revisions to the underlying data or the addition of data for the month of January.

The table below shows, for chicken meat production for the six months ended December:

- trend estimates as published;
- trend estimates assuming an increase in seasonally adjusted data for January of 4% on the December figure;
- trend estimates assuming a decrease in seasonally adjusted data for January of 4% on the December figure.

The percentage change of 4% was chosen because the average absolute monthly percentage change in the seasonally adjusted data since the inception of the series has been 4.11%

	Trend as published	Trend change with seasonally adjusted December estimate	
		+4%	-4%
(tonnes, carcass weight)			
1995-96p			
July	38,184	38,118	38,183
August	38,604	38,484	38,598
September	39,063	39,007	39,064
October	39,354	39,464	39,313
November	39,546	39,914	39,415
December	39,711	40,442	39,501
January	—	40,931	39,513

TABLE 9. WHOLE MILK INTAKE BY FACTORIES (a)
(Source: Australian Dairy Corporation)
(Million Litres)

	NSW	Vic.	Qld	SA	WA	Tas.	Aust.	Seasonally adjusted	Trend estimate(b)
1992-93	997	4,456	702	436	324	413	7,327
1993-94	1,098	4,967	764	456	344	447	8,077
1994-95	1,087	5,113	741	484	343	436	8,206
<i>1994-95 —</i>									
September	96	565	64	47	33	44	849	701	700
October	101	700	66	53	33	63	1,016	694	695
November	96	688	62	49	28	66	988	695	688
December	96	626	64	46	26	62	919	688	678
January	97	513	65	42	26	46	789	659	667
February	86	391	58	34	25	36	630	662	661
March	89	340	65	33	28	34	589	653	661
April	81	248	57	32	27	25	469	654	670
May	82	224	57	35	28	19	443	671	684
June	82	213	59	36	28	12	430	734	699
<i>1995-96 p—</i>									
July	87	245	62	39	31	10	474	721	711
August	92	373	63	45	32	19	623	703	717
September	97	586	65	51	32	46	876	724	720
October	105	726	67	55	32	68	1,054	722	720
November	100	689	66	51	28	70	1,005	707	718
<i>5 Months ended November —</i>									
1994	474	2,559	316	227	156	203	3,937
1995 p	481	2,620	322	241	155	213	4,032

(a) Includes the whole milk equivalent of farm cream intake. (b) Trend estimates for the most recent months are subject to revision when data for subsequent months become available.

TABLE 10. MARKET MILK SALES BY FACTORIES (a)
(Source: Australian Dairy Corporation)
(Million Litres)

	NSW	Vic.	Qld	SA	WA	Tas.	Aust.
1992-93	599	449	348	153	177	51	1,777
1993-94	607	454	356	159	181	53	1,811
1994-95	605	452	368	167	188	52	1,832
<i>1994-95 —</i>							
September	50	38	30	14	16	5	152
October	52	38	31	14	15	5	154
November	50	37	30	14	15	4	151
December	49	37	31	15	15	4	150
January	50	36	30	14	16	4	150
February	47	35	29	13	15	4	142
March	52	39	33	15	17	5	160
April	50	37	30	13	15	4	149
May	53	40	32	14	17	4	159
June	51	39	31	13	16	4	154
<i>1995-96 p—</i>							
July	53	38	32	13	15	4	156
August	52	40	32	14	16	4	158
September	50	37	32	13	15	4	152
October	52	40	31	14	16	4	157
November	50	37	30	14	15	4	151
<i>5 Months ended November —</i>							
1994	254	190	154	70	78	22	767
1995 p	256	193	157	69	78	21	773

(a) Includes white, flavoured, high and low fat milk, uht milk.



**RELIABILITY OF NOVEMBER TREND ESTIMATES
FOR WHOLE MILK INTAKE BY FACTORIES**

Readers should exercise care in the interpretation of trend data as the last six observations, in particular, are likely to be revised with either revisions to the underlying data or the addition of data for the month of December.

The table below shows, for whole milk intake by factories for the six months ended November:

- trend estimates as published;
- trend estimates assuming an increase in seasonally adjusted data for December of 2% on the November figure;
- trend estimates assuming a decrease in seasonally adjusted data for December of 2% on the November figure.

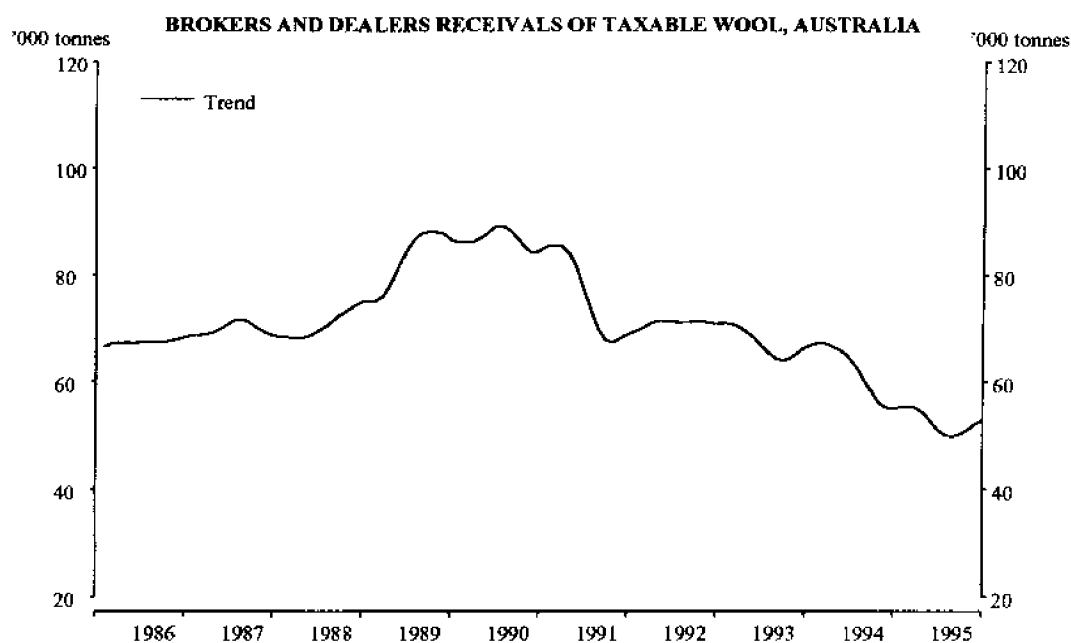
The percentage change of 2% was chosen because the average absolute monthly percentage change in the seasonally adjusted data since the inception of the series has been 1.97%

	<i>Trend as published</i>	<i>Trend change with seasonally adjusted November estimate</i>	
		+2%	-2%
(tonnes, carcass weight)			
1994-95			
June	699	699	700
1995-96p			
July	711	711	712
August	717	717	718
September	720	719	718
October	720	719	715
November	718	718	710
December	—	716	704

TABLE 11. BROKERS AND DEALERS RECEIVALS OF TAXABLE WOOL
(Tonnes)

	Australia						Total	% of Total received by brokers	Seasonally adjusted	Trend estimate(a)
	NSW	Vic.	Qld	SA	WA	Tas.				
1992-93	252,176	203,572	57,998	109,322	203,626	17,384	844,077	83.3
1993-94	205,822	190,047	55,110	102,340	212,266	18,633	784,218	81.0
1994-95 r	177,691	171,792	51,935	86,977	173,383	17,577	679,355	83.5
<i>1994-95 r—</i>										
October	22,006	25,903	4,082	12,542	22,192	1,940	88,665	85.3	54,815	56,112
November	18,398	23,650	2,605	9,435	15,205	3,041	72,333	81.6	49,008	55,241
December	11,313	16,174	1,693	4,268	6,496	1,609	41,552	79.1	54,749	55,084
January	9,994	8,691	2,234	4,071	10,640	1,764	37,394	83.3	55,429	55,277
February	12,599	10,913	3,778	6,115	15,167	860	49,432	83.4	60,039	55,442
March	13,087	11,110	5,161	7,392	16,114	726	53,590	82.1	57,030	55,222
April	8,689	6,675	3,751	5,231	9,478	699	34,522	80.9	53,280	54,258
May	9,278	6,280	4,478	3,733	6,877	1,698	32,344	81.2	46,673	52,623
June	9,171	5,593	4,860	2,444	5,163	571	27,803	78.5	56,437	50,933
<i>1995-96 p—</i>										
July	11,803	6,063	4,990	4,399	9,632	882	37,768	81.4	48,715	49,930
August	17,206	14,920	5,534	10,529	22,416	1,445	72,050	88.2	50,298	49,789
September	18,702	20,452	4,777	12,787	19,675	1,499	77,893	87.8	46,610	50,248
October	20,013	29,461	3,633	13,012	21,125	1,800	89,044	88.8	52,647	51,031
November	17,507	22,435	2,002	9,639	15,531	2,475	69,588	87.1	49,893	52,117
December	12,561	15,601	1,899	4,456	6,953	1,627	43,096	82.9	57,714	52,937
<i>6 Months ended</i>										
<i>December—</i>										
1994	114,873	122,529	27,675	57,990	109,944	11,259	444,270	80.7
1995 p	97,792	108,932	22,835	54,822	95,333	9,727	389,440	85.5

(a) Trend estimates for the most recent months are subject to revision when data for the subsequent months become available.



**RELIABILITY OF DECEMBER TREND ESTIMATES
FOR WOOL RECEIVALS**

Readers should exercise care in the interpretation of trend data as the last six observations, in particular, are likely to be revised with either revisions to the underlying data or the addition of data for the month of January.

The table below shows, for wool receivals for the six months ended December:

- trend estimates as published;
- trend estimates assuming an increase in seasonally adjusted data for January of 9% on the December figure;
- trend estimates assuming a decrease in seasonally adjusted data for January of 9% on the December figure.

The percentage change of 9% was chosen because the average absolute monthly percentage change in the seasonally adjusted data since the inception of the series has been 9.46%

	<i>Trend as published</i>	<i>Trend change with seasonally adjusted December estimate</i>	
		+9%	-9%
(tonnes, carcass weight)			
1995-96p			
July	49,930	49,679	49,890
August	49,789	49,350	49,721
September	50,248	50,050	50,235
October	51,031	51,503	51,014
November	52,117	53,562	51,945
December	52,937	55,870	52,822
January	—	58,623	54,024

EXPLANATORY NOTES

Introduction

This publication contains information (preliminary where indicated) on livestock slaughterings, meat production, stocks of frozen meat, exports of live sheep and live cattle, exports of fresh, frozen and processed meat, and whole milk intake by factories, market milk sales by factories and receivals of taxable wool by wool brokers and dealers.

Livestock slaughterings and meat production

2. The statistics on slaughterings and meat production are based on a monthly collection from abattoirs and other major slaughtering establishments and include estimates of animals slaughtered on farms and by country butchers and other small slaughtering establishments.

3. Care should be taken when using this information as the figures only relate to slaughterings for human consumption and do not include animals condemned or those killed for boiling down. Since July 1994 the definition of livestock categories between States has been standardised.

4. Poultry slaughterings statistics have been compiled from returns supplied by commercial poultry slaughtering establishments. Producers in the Northern Territory and the Australian Capital Territory and the many very small producers are excluded from the collection; however, the statistics represent a high level of coverage.

Live sheep and cattle exports

5. These tables contain statistics of the number of live sheep and cattle exported, the gross weight, gross value and unit value. Sheep or cattle exported for breeding are excluded.

Milk

6. Tables 9 and 10 contain statistics collected by the Australian Dairy Corporation (ADC) on whole milk intake and market milk sales by factories.

Wool receivals

7. The statistics in Table 11 show the amount of taxable wool received by brokers and dealers from wool producers. It excludes wool received by brokers on which tax has already been paid by other dealers (private buyers) or brokers.

8. The information shown is on the basis of the State in which wool has actually been received and does not necessarily reflect the production of wool in that State.

Seasonal adjustment

9. Details of seasonally adjusted figures for livestock slaughterings, red meat, milk and wool are shown in Tables 1, 2, 9 and 11 respectively. Information on the methods used in seasonally adjusting these series is available on request.

Trend Estimates and Sensitivity Analysis

10. A trend estimate is obtained by reducing the irregular component from the seasonally adjusted series. In this publication trend estimates are

generally derived by applying a 13 term Henderson moving average to the seasonally adjusted series. The 13 term Henderson, (like all Henderson averages) is symmetric, but as the end of a time series is approached, asymmetric forms of the average are applied. While the asymmetric weights enable the trend to be calculated for the latest month, it does result in revisions to the last six estimates as additional observations become available.

11. Sensitivity analysis indicates the potential magnitude and direction of revisions created to the last six estimates. It aims to show how a specified movement in the seasonally adjusted data in the next period will affect the trend path of the time series. By showing how sensitive the trend estimates are to the addition of new data, the analysis provides information which can be used in the assessment of the trend's stability. For further information, see *A Guide to Interpreting Time Series - Monitoring "Trends", an Overview* (1348.0) or contact the Assistant Director, Time Series Analysis on (06) 252 6345.

Related publications

12. Users may also wish to refer to the following priced publication which is available on request:

Livestock and Livestock Products, Australia (7221.0)

Apparent Consumption of Selected Foodstuffs, Australia 1994-95, Preliminary (4315.0)

13. Current publications produced by the ABS are listed in the Catalogue of Publications and Products, Australia (1101.0). The ABS also issues, on Tuesdays and Fridays, a Publication Advice (1105.0) which lists publications to be released in the next few days. The Catalogue and Publications Advice are available from any ABS office.

Next release date

14. The expected release date for the January 1996 issue of this publication is 8 March 1996. The date can be confirmed a few days prior to release by telephoning (06) 252 5226.

Symbols and other usages

p preliminary
 .. not applicable
 — nil or rounded to zero

15. The figures shown in this publication have been revised where necessary and as a consequence may not agree with similar data shown in previous publications.

16. Where figures have been rounded, discrepancies may occur between sums of the component items and totals.

17. Unless indicated otherwise, Australian totals include data for all States and both Territories.

W. McLennan
 Australian Statistician

For more information . . .

The ABS publishes a wide range of statistics and other information on Australia's economic and social conditions. Details of what is available in various publications and other products can be found in the ABS Catalogue of Publications and Products available from all ABS Offices.

ABS Products and Services

Many standard products are available from ABS bookshops located in each State and Territory. In addition to these products, information tailored to the needs of clients can be obtained on a wide range of media by contacting your nearest ABS Office. The ABS also provides a Subscription Service for standard products and some tailored information services.

National Dial-a-Statistic Line

0055 86 400

Steadycom P/L: premium rate 25c/21.4 secs.

This number gives 24-hour access, 365 days a year, for a range of important economic statistics including the CPI.

Internet

<http://www.statistics.gov.au>

A wide range of ABS information is available via the Internet, with basic statistics available for each State, Territory and Australia. We also have Key National Indicators, ABS product release details and other information of general interest.

Sales and Inquiries

Keylink STAT.INFO/ABS
X.400 (C:Australia,PUB:Telememo,O:ABS,FN:STAT,SN:INFO)
Internet stat.info@abs.telememo.au

National Mail Order Service (06) 252 5249
Subscription Service 1800 02 0608

	Information Inquiries	Bookshop Sales
SYDNEY	(02) 268 4611	268 4620
MELBOURNE	(03) 9615 7755	9615 7755
BRISBANE	(07) 3222 6351	3222 6350
PERTH	(09) 360 5140	360 5307
ADELAIDE	(08) 237 7100	237 7582
HOBART	(002) 205 800	205 800
CANBERRA	(06) 252 6627	207 0326
DARWIN	(089) 432 111	432 111



Client Services, ABS, PO Box 10, Belconnen ACT 2616

Produced by the Australian Government Publishing Service
© Commonwealth of Australia 1996

Recommended retail price: \$13.00



2721500012956
ISSN 0728-4047